

PRODUCT BROCHURE



JITAMITRA

CENTRIFUGAL FANS & BLOWERS

Trusted for **On-Time DELIVERY** & **innovative PRODUCT RANGE** with
'IS', 'CE', 'ATEX', 'AMCA', 'API' STANDARDS

© JITAMITRA ELECTRO ENGINEERING PVT. LTD.

JITAMITRA is a part of **Zen Group** of companies. Since **1992**, **Zen Group** has excelled in **manufacturing** of **Induction Motors, Pumps, Alternators, Switch Gears, and Fans & Blowers**. **JITAMITRA** brand continues to grow as a **leader in India and abroad** for its **dependability & reliability**.

**JITAMITRA
INCEPTION**

2009

**FANS & BLOWERS
MANUFACTURED**

15000+

**YEARS OF FAN
MANUFACTURING
EXPERIENCE**

14+

**MANUFACTURING
CAPACITY OF FANS
PER YEAR**

2500+

**PRODUCTION FLOOR
SPACE (SQ. FT.)**

32000+

**MANPOWER
STRENGTH**

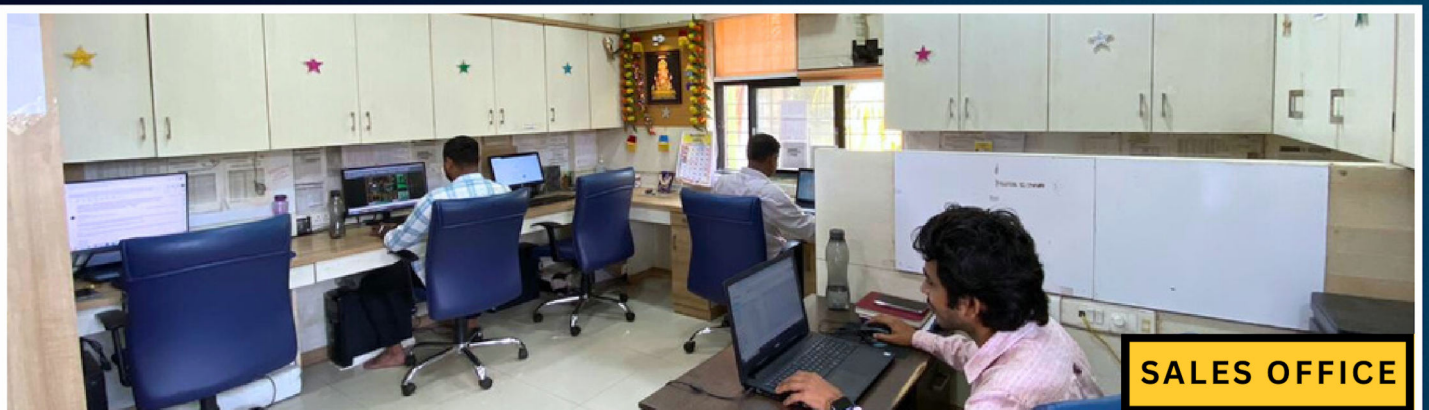
70



NEW PLANT



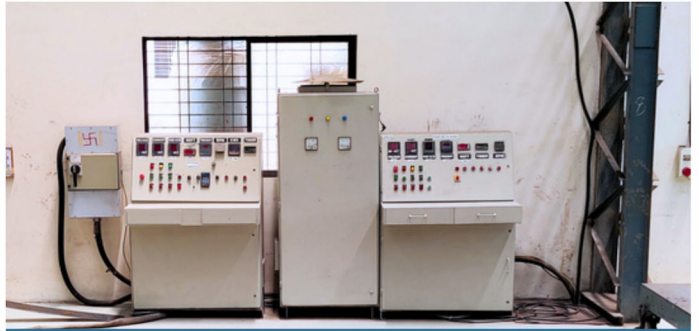
OUR TEAM



SALES OFFICE



FIBER LASER MACHINE



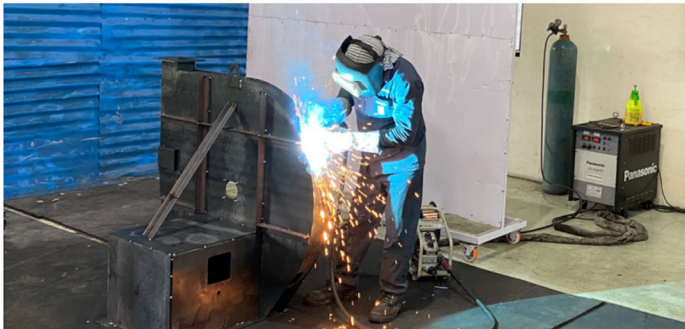
200 HP VFD TEST SETUP



CNC PRESS BREAK MACHINE



RIGID MOUNTING TEST BED



QUALIFIED WELDERS



ENCLOSED PAINT BOOTH



SPINNING MACHINE



PACKAGING & FUMIGATION



BALANCING MACHINE

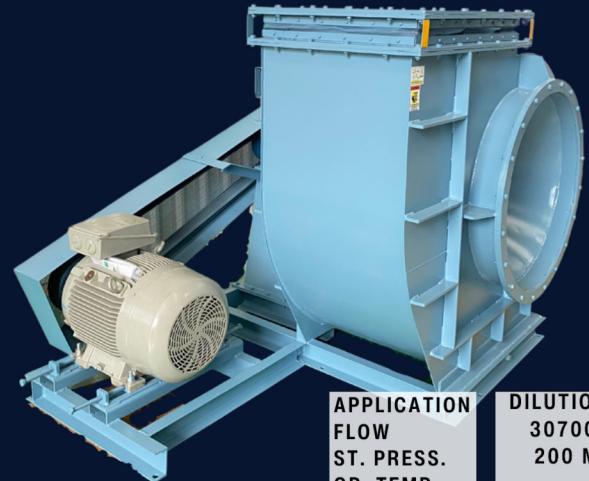


IN-HOUSE LOGISTICS



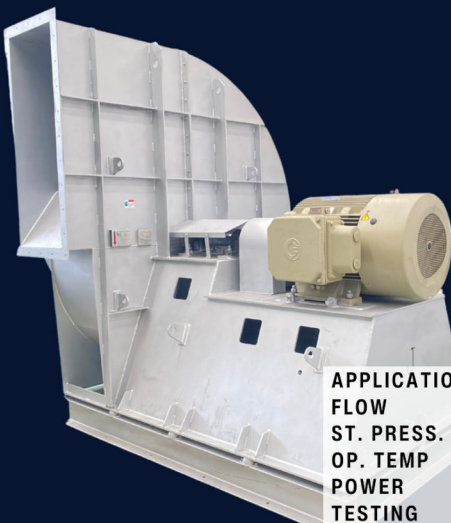
APPLICATION	ID FAN
FLOW	18000 CMH
ST. PRESS.	475 MMWC
OP. TEMP	60°C
POWER	50 HP
TESTING	IS 4894

DIRECT DRIVE



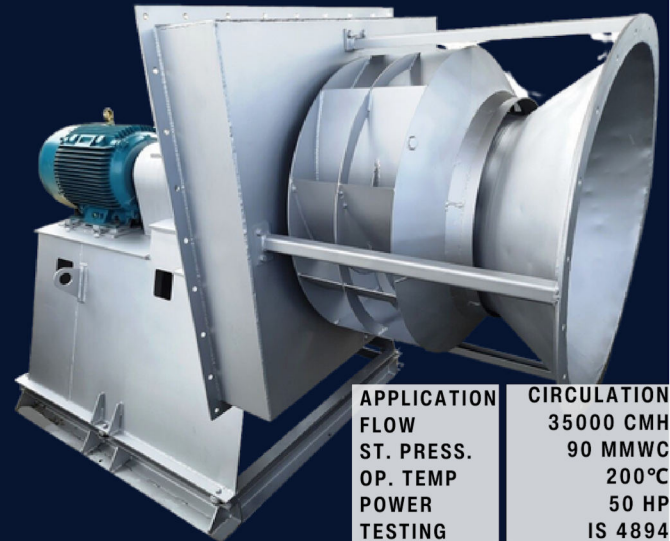
APPLICATION	DILUTION AIR
FLOW	30700 CMH
ST. PRESS.	200 MMWC
OP. TEMP	40°C
POWER	40 HP
TESTING	IS 4894

BELT DRIVE



APPLICATION	ASPIRATION
FLOW	51000 CMH
ST. PRESS.	450 MMWC
OP. TEMP	80°C
POWER	150 HP
TESTING	IS 4894

COUPLED DRIVE



APPLICATION	CIRCULATION
FLOW	35000 CMH
ST. PRESS.	90 MMWC
OP. TEMP	200°C
POWER	50 HP
TESTING	IS 4894

PLUG



APPLICATION	AIR SUPPLY
FLOW	140000 CMH
ST. PRESS.	110 MMWC
OP. TEMP	30°C
POWER	100 HP
TESTING	IS 4894

DIDW



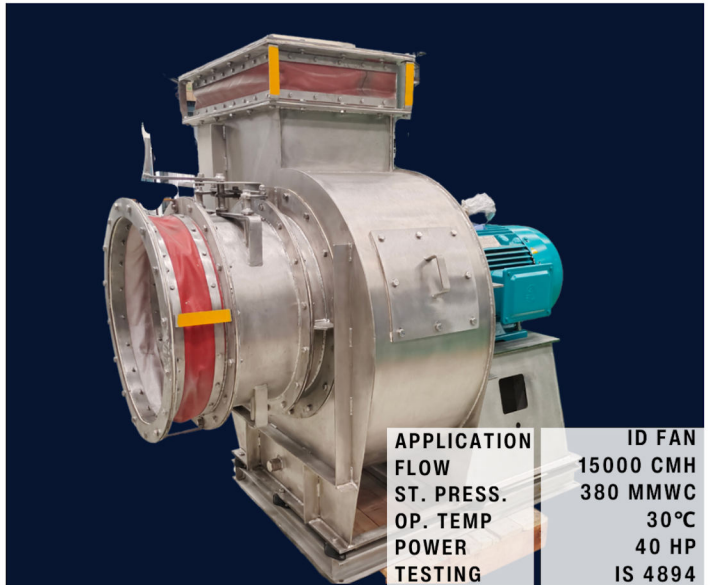
APPLICATION	EXHAUST
FLOW	4000 CMH
ST. PRESS.	420 MMWC
OP. TEMP	30°C
POWER	15 HP
TESTING	IS 4894

FLANGE MOUNTED



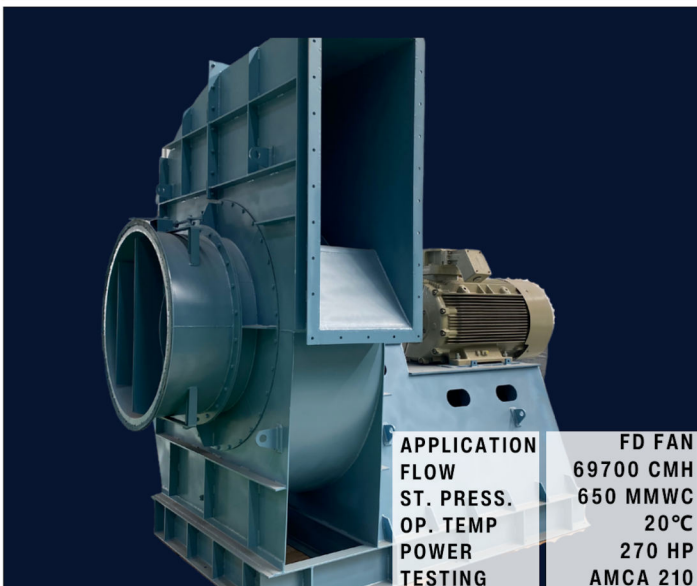
APPLICATION	EXHUAUST
FLOW	80000 CMH
ST. PRESS.	250 MMWC
OP. TEMP	40°C
POWER	120 HP
TESTING	IS 4894

PP FRP CASING



APPLICATION	ID FAN
FLOW	15000 CMH
ST. PRESS.	380 MMWC
OP. TEMP	30°C
POWER	40 HP
TESTING	IS 4894

SS 304



APPLICATION	FD FAN
FLOW	69700 CMH
ST. PRESS.	650 MMWC
OP. TEMP	20°C
POWER	270 HP
TESTING	AMCA 210

HEAVY DUTY



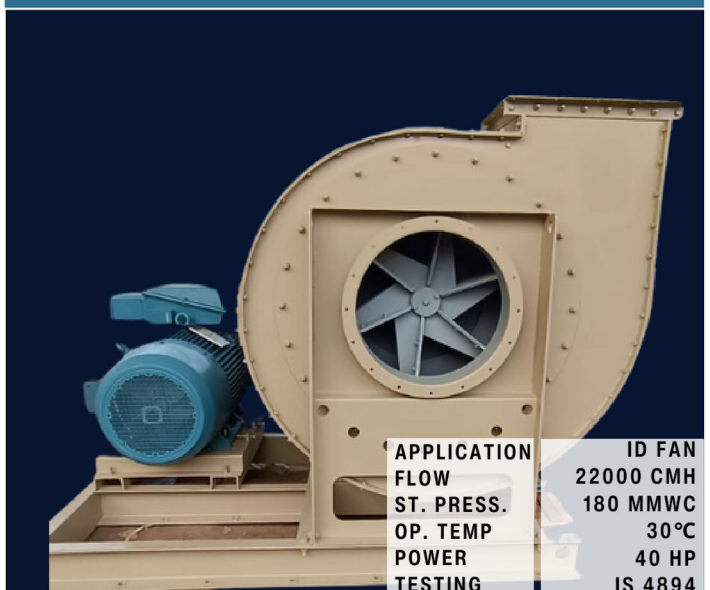
APPLICATION	EXHUAUST
FLOW	1000 CMH
ST. PRESS.	200 MMWC
OP. TEMP	20°C
POWER	3 HP
TESTING	CE EX D T4

CE & ATEX CERTIFIED



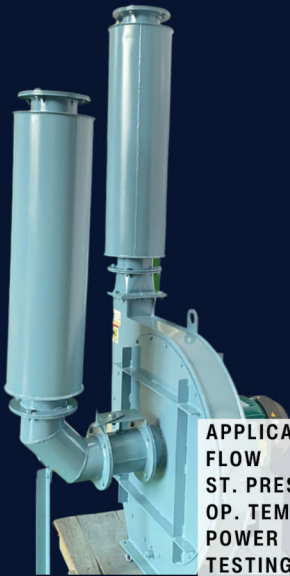
APPLICATION	CIRCULATION
FLOW	13500 CMH
ST. PRESS.	100 MMWC
OP. TEMP	40°C
POWER	10 HP
TESTING	IS 4894

PLENUM



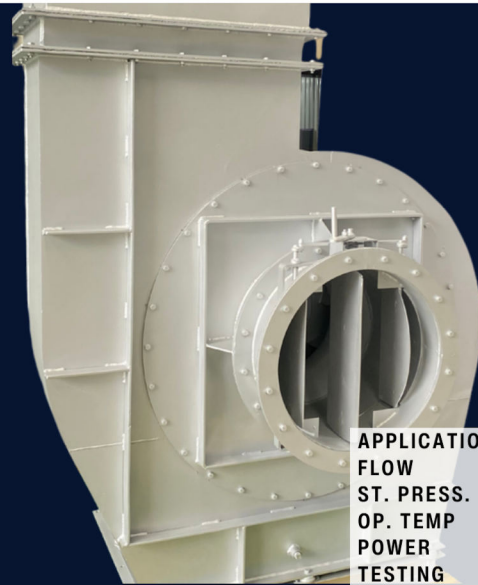
APPLICATION	ID FAN
FLOW	22000 CMH
ST. PRESS.	180 MMWC
OP. TEMP	30°C
POWER	40 HP
TESTING	IS 4894

PADDLE TYPE IMPELLER



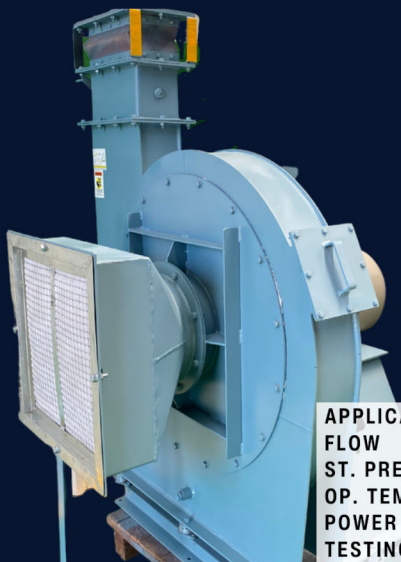
APPLICATION	COMBUSTION
FLOW	850 CMH
ST. PRESS.	900 MMWC
OP. TEMP	30°C
POWER	7.5 HP
TESTING	IS 4894

SILENCER



APPLICATION	ASPIRATION
FLOW	15300 CMH
ST. PRESS.	305 MMWC
OP. TEMP	80°C
POWER	30 HP
TESTING	IS 4894

DAMPER



APPLICATION	COMBUSTION
FLOW	4000 CMH
ST. PRESS.	950 MMWC
OP. TEMP	40°C
POWER	25 HP
TESTING	IS 4894

FILTER



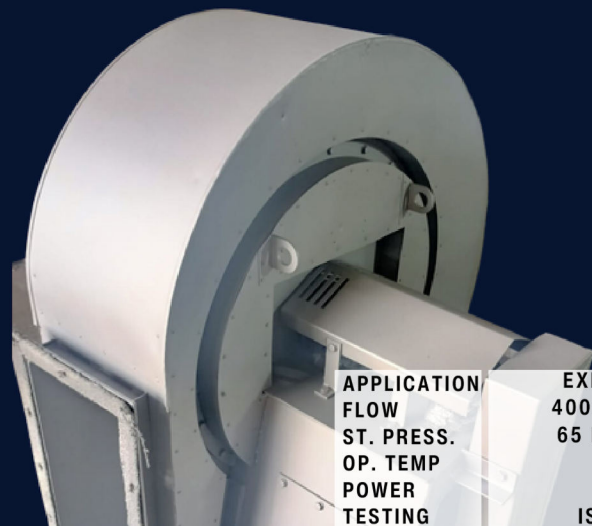
APPLICATION	EXHAUST
FLOW	1000 CMH
ST. PRESS.	200 MMWC
OP. TEMP	20°C
POWER	3 HP
TESTING	CE EX D T4

FLEXIBLE CONNECTION



APPLICATION	EXHAUST
FLOW	34000 CMH
ST. PRESS.	150 MMWC
OP. TEMP	40°C
POWER	30 HP
TESTING	IS 4894

ACOUSTIC ENCLOSURE



APPLICATION	EXHAUST
FLOW	4000 CMH
ST. PRESS.	65 MMWC
OP. TEMP	200°C
POWER	3 HP
TESTING	IS 4894

INSULATION WITH CLADDING

FAN CAPACITY RANGE

VOL. FLOW (max) :	3,00,000 CMH
ST. PRESS. (max):	2,000 mmWC
POWER (max):	500 HP
OP. TEMP. (max):	600 °C

FAN STANDARDS

IS 4894	CE
BS 848	ATEX ZONE 2/22
ISO 5801	API 560
AMCA 210	API 673

FAN MATERIALS

MILD STEEL & ALLOYS

STAINLESS STEEL-

304/ 310/ 316

ALUMINIUM

ASTM - A36

SA 516 GR. 70

DOMEX 700

DUPLEX 2205

FRP COATING

GI CLADDING

SHAFT EN- 8/ 9/ 19,

SS 304/ 310/ 316

IMPELLER TYPES

BACKWARD CURVED

BACKWARD INCLINED

RADIAL

RADIAL TIP

FORWARD CURVED

FORWARD INCLINED

AEROFOIL

HARD FACING

IMPELLER LINING

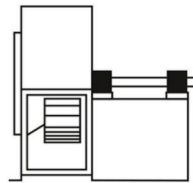
DUST HANDLING

OPEN TYPE

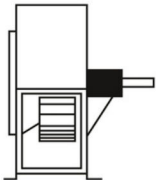
PADDLE TYPE

SW – Single Width DW – Double Width
SI – Single Inlet DI – Double Inlet

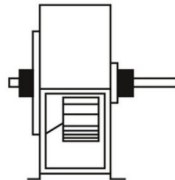
Arrangements 1, 3, 7, and 8 are also available with bearings mounted on pedestals or base set independent of the fan housing.



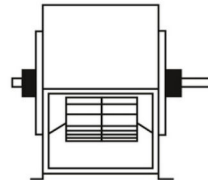
Arr. 1 SWSI: For belt drive or direct connection. Impeller overhung. Two bearings on base.



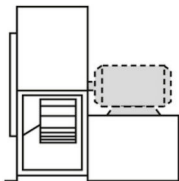
Arr. 2 SWSI: For belt drive or direct connection. Impeller overhung. Bearings in bracket supported by fan housing.



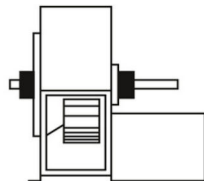
Arr. 3 SWSI: For belt drive or direct connection. One bearing on each side and supported by fan housing.



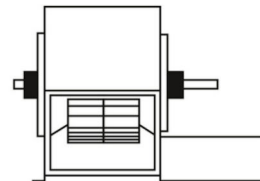
Arr. 3 DWDI: For belt drive or direct connection. One bearing on each side and supported by fan housing.



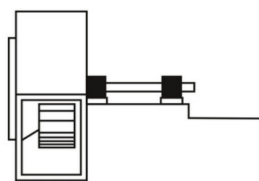
Arr. 4 SWSI: For direct drive. Impeller overhung on prime mover shaft. No bearings on fan. Prime mover base mounted or integrally directly connected.



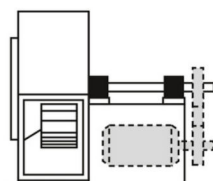
Arr. 7 SWSI: For belt drive or direct connection. Arrangement 3 plus base for prime mover.



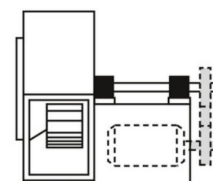
Arr. 7 DWDI: For belt drive or direct connection. Arrangement 3 plus base for prime mover.



Arr. 8 SWSI: For belt drive or direct connection. Arrangement 1 plus extended base for prime mover.



Arr. 9 SWSI: For belt drive. Impeller overhung, two bearings, with prime mover outside base.



Arr. 10 SWSI: For belt drive. Impeller overhung, two bearings, with prime mover inside base.

FAN DRIVE ARRANGEMENT

SWSI

DWDI

WITHOUT INLET BOX

WITH INLET BOX

DIRECT

COUPLED

BELT DRIVEN

PLUG

PLENUM

**AFTER
GETTING
YOUR
ENQUIRY,**



**WE WILL CHOOSE
THE BEST FAN
FOR YOU WITH**

- 1. CORRECT DUTY POINT!**
- 2. BEST EFFICIENCY! &**
- 3. LOWEST COST!**

JITAMITRA

FOR YOUR EVERY NEED!

WE ARE MANUFACTURING FANS & BLOWERS FOR
500+ HAPPY CUSTOMERS, 20+ INDUSTRIES & 100+ APPLICATIONS!
JITAMITRA FANS ARE CURRENTLY PERFORMING IN:



PHARMACEUTICAL & FOOD INDUSTRIES



- FLUID BED DRYERS
- GRANULATION EQUIPMENT
- TABLET COATING MACHINES

- FUME HOODS & CONTAINMENT
- DUST COLLECTION & VENTILATION
- LABORATORY EQUIPMENT

PAINT SHOP INDUSTRY



- PAINT SPRAY BOOTHS
- EXHAUST SYSTEMS
- DRYING OVENS & CURING SYSTEMS

- FILTRATION SYSTEMS
- DUST COLLECTION SYSTEMS
- ENVIRONMENT CONTROL SYSTEMS

FURNACE & OVENS INDUSTRIES



- FLUE GAS SYSTEMS
- HEAT TREATMENT FURNACE
- MELTING FURNACES

- INDUCTION FURNACES
- OVENS & KILNS
- EXHAUST & VENTILATION SYSTEMS

POLLUTION CONTROL EQUIPMENT INDUSTRY



- DUST COLLECTION SYSTEM
- FUME & GAS EXTRACTION SYSTEM
- AMMONIA SCRUBBER SYSTEMS

- INDUSTRIAL VENTILATION SYSTEM
- PARTICULATE EMISSION CONTROL
- ODOR CONTROL SYSTEMS

OIL & GAS INDUSTRIES



- GAS FLARING SYSTEM
- REFINERY VENTILATION
- EMISSION CONTROL SYSTEMS

- OFFSHORE PLATFORMS
- VAPOR RECOVERY UNITS
- GAS TURBINE POWER GENERATION

PROCESSING INDUSTRIES



- MATERIAL DRYING SYSTEMS
- PNEUMATIC CONVEYING SYSTEMS
- MATERIAL SEPARATION SYSTEMS

- SPRAY DRYING SYSTEMS
- MATERIAL HANDLING SYSTEMS
- EXTRUSION & INJECTION MOLDING

STEEL & POWER INDUSTRIES



- BLAST FURNACES
- STEEL ROLLING MILLS
- SINTERING PLANT

- ELECTRIC ARC FURNACES
- COOLING SYSTEMS
- BOILERS & POWER GENERATION



SEND YOUR ENQUIRIES NOW!

CONTACT US ONLINE



CONTACT OUR EXPERTS



Sales & Estimation

Ranjit Madane

ranjit.jitamitra@gmail.com

(+91) 9011029532

Technical Services

Rajendra Kamble

rajendra.jitamitra@gmail.com

(+91) 9011009169

R&D, Engineering

Mihir Kulkarni

mihir.jitamitra@gmail.com

(+91) 9011009155

CONTACT OUR OFFICE & MANUFACTURING PLANTS



Works Unit 1: Plot No. N-7, MIDC Area,
Ahmednagar, Maharashtra, India - 414111

Works Unit 2: Plot No. B-20/2, MIDC Area,
Ahmednagar, Maharashtra, India - 414111



Sales office:

Office No. 201+202, Anmol
Heights, Karvenagar, Pune,
Maharashtra, India - 411052